

Preserving Our History

Preservation projects to begin this month

Our spiritual home turns 120 years old in 2025 and needs your help. As you might imagine, a structure built more than 100 years ago requires ongoing maintenance and often significant repairs.

The parish will soon begin a series of major projects that will impact parishioners and visitors alike, but said projects are intended to ensure the long-lasting original elements central to the character, history, and spirituality of our parish are passed on to future generations.

These repairs will cost the parish about \$200,000, and are set to begin as early as the second week of April.

These projects will require scaffolding and, at times, plywood coverings as elements are being refurbished, but daily access for Mass, Reconciliation and prayer should not be impacted.

Our parish is dependent on the stewardship and generosity of its parishioners. The friars and parish leadership are grateful to all of you for your attention to these projects, as your contributions will ensure the expedient completion of these projects. While the first phase is funded, additional phases are still in need of financial assistance. If you are able, please consider an additional gift to the parish maintenance fund this Easter Season.

Phase 1 | Upper Façade

Phases of our upcoming projects

Phase 1 will address the upper sections of the front of the church, along with the restoration of the remaining sets of doors.

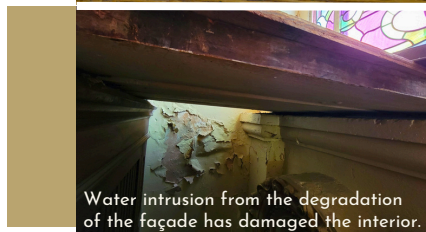
This phase includes the cleaning of the marble façade, the reappointing (*resealing and filling holes in grout to prevent future water intrusion*) of the façade and windows, and repairs of the statue of the Sacred Heart of Jesus as well as the cross on the roof.

Phase 2 will see the cleaning and reappointing of the lower half of the front façade, and the resealing of the ledge above the main entrance to prevent water intrusion.

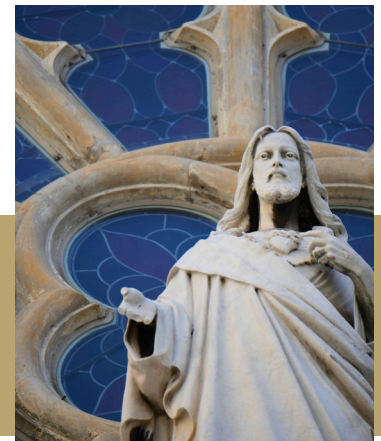
Additional phases are still seeking funding arms, but are planned to address similar issues in other areas of the exterior.



Light shining through doors of central entrance.



Water intrusion from the degradation of the façade has damaged the interior.



Examples of what we will address

Many of you will be familiar with the ongoing restoration of the doors of the church. Each of the remaining sets will be dealt with during phase 1 of our restoration projects.

Water intrusion from rain and storms has created issues for interior walls, with plaster and paint puckering in areas where holes in the exterior grout have allowed moisture to collect or travel.

Lending a hand to our preservation

Phase 1 includes the cleaning and repair of the statue of the Sacred Heart of Jesus, situated above the main entryway, in front of the rose window.

The statue will have the broken fingers of the outstretched right hand reattached. While a small detail, this refurbishment is at the heart of this the warm and inviting symbol of our parish's dedication and mission.